

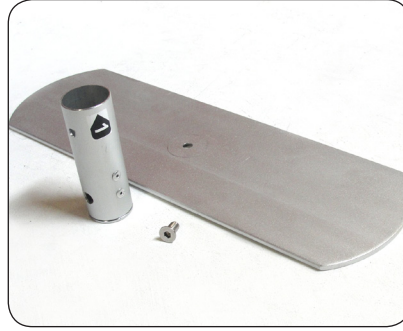
EZ Tube Straight

INSTRUCTIONS



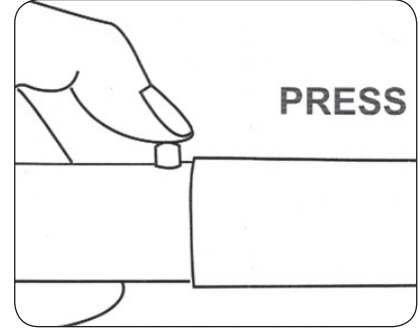
Step 1

Open the bag, and remove all the frames and parts from the bag.



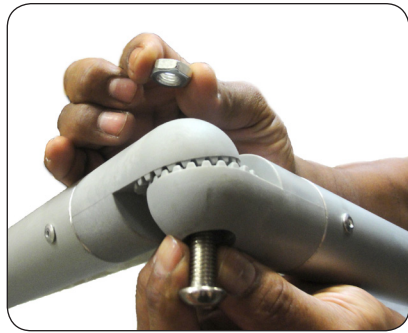
Step 2

Disassemble feet and pole if it is attached.



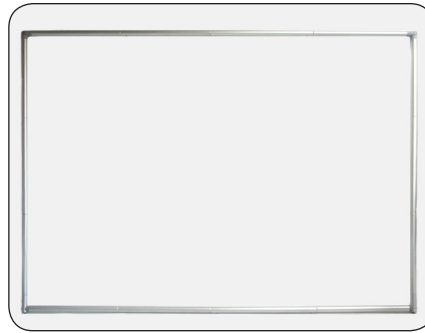
Step 3

Snap each pole together.



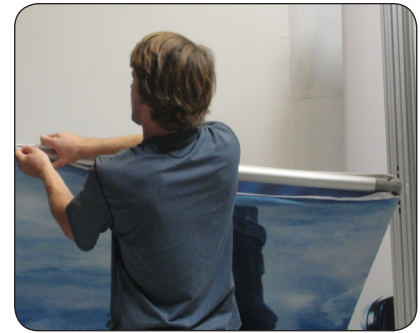
Step 4

Tighten the screws using the inner hexagon bolt for top corners.



Step 5

Put the graphic on from bottom to top.



Step 6

zip the graphic print on the top.



Step 7

Attach feet to bottom left and right.



Optional Accessories

EZ Tube Light

LED Light

Emitting Color: White

Luminous Intensity: 2500 mcd

Power: 12Volts - 1500ma

Natural Life: 10000hours

Operation Temperature: 45°C (113F)

