

Retractor 5

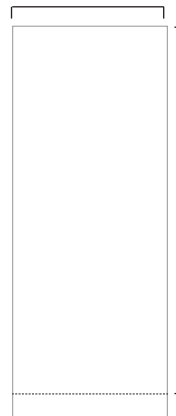
A lightweight durable DFA roller banner with slim base and bungee pole making it very compact, complete with a twist out foot for extra stability.



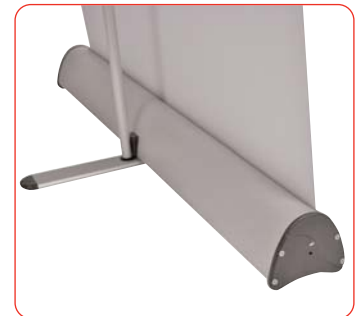
features & benefits

- Lightweight components
- Re-usable quick-change snap top rail
- Hook/loop fastening quick change graphic application
- Twist out stabilising foot for extra stability
- Available in anodised silver
- 36"/ 915mm graphic width

36" (915mm)



79.25" (2013mm)



Graphic dimensions (approx)

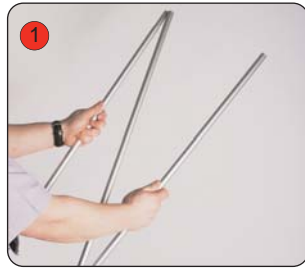
hardware specifications	graphic specifications	additional info
<p>36" (915mm) hardware dimensions: 83"(t) x 37.5" (w) x 15.75"(d)(footprint) 2108mm(t) x 952mm(w) x 390mm (d) (Depth dimension refers to twist out foot)</p>	<p>Visible Graphic Dimensions (mm): 79.25(h) x 36" (w) 2013mm (h) x 915mm (w)</p> <p>Substrate: Add 6"(152mm) bleed graphic to allow for roller mechanism.</p>	<p>Shipping Weight and Dimension: 5"(127mm) x 5"(127mm)x39.25"(997mm) 7.5lbs (3.41kgs)</p> <p>Recommended accessories: Luminosity Lighting low-pro-graphicreplacement kit (loop) 12pcs Low pro leader replacement (hook) 6 pcs</p>

Assembly Instructions

Banner stand assembly



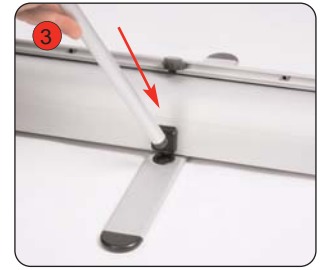
Kit includes: Top rail, base, bungee pole set and carry bag



Assemble the bungee



Open out the stabilising foot.



Fit the bungee pole into the stabilising foot.



Lift the top rail to raise the graphic from the base.



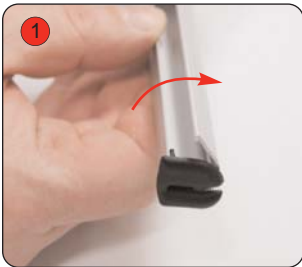
Lean the banner stand backwards and continue to extend the graphic.



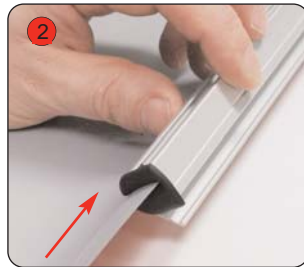
Secure the top rail cup onto the bungee pole.

Hold the Top rail while lowering the banner, (do not drop) to prevent damage to the graphic

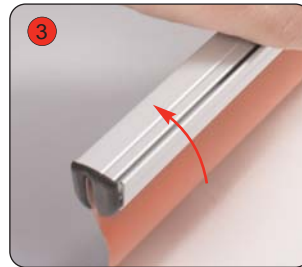
Graphic attachment instructions



Rotate open the snap rail.



Slide the graphic squarely into the rail.



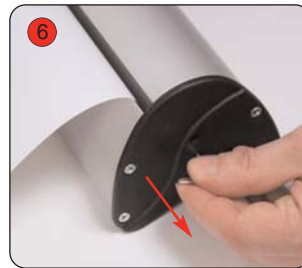
Squeeze the snap rail shut to secure the graphic into place



Align and adhere hook fastener squarely to the bottom edge of the graphic.
(attach to back of graphic)



Securely attach the graphic to the loop fastener on the leader



While holding the top rail remove the locking pin from the base and gently allow the graphic to retract.



After fitting, the graphic should be left for 24 hours before use, to ensure the adhesive bonds sufficiently.

Note: Opening the banner stand base may invalidate the product warranty.