

Retractor 4



features & benefits

The elegance and simplicity in a double sided banner stand! Dual retractor mechanisms allow you to present two graphics back to back stand with snap lock top rail & bag
RTRC-4

hardware specifications	graphic specifications	additional info
Max height: 78.75 Foot print: 35" X 14"	32.75"w x 78.75"h + 6" bleed	Shipping weight: 8.1 lbs. Shipping dim: 37" x 15" x 14"

We are continually improving and modifying our product range and reserve the right to vary the specifications without prior notice. All dimensions and weights quoted are approximate and we accept no responsibility for variance. E&OE.

Assembly Instructions

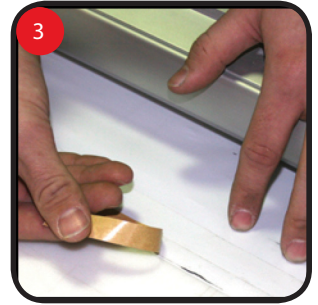
Graphic Application



1 Open graphic rail and insert graphic into graphic rail.



2 Firmly press down on graphic rail to close



3 Remove paper backing from the tape on the leader strip.



4 Attach the bottom of the graphic to the leader strip (back of graphic attaches to leader strip.)



5 With a firm secure hold on the graphic remove graphic roller pin.



6 Slowly retract graphic into the unit making sure it is straight.

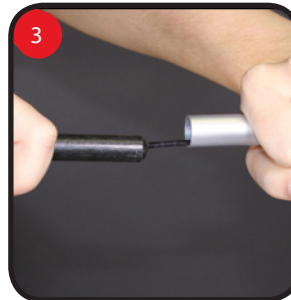
Unit Instructions



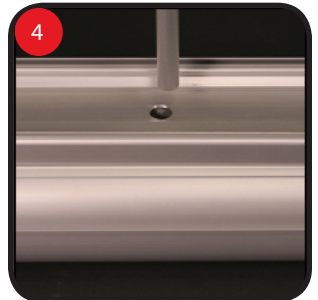
1 Remove pole from pole compartment on the unit.



2 Secure the stabilizing feet at 90° position to the unit.



3 Assemble poles



4 Secure pole onto the pole pin.



5 Gently un-retract graphic from unit.



6 Secure the graphic rail to the top of the pole.



7 Gently un-retract other graphic from unit.



8 Secure the graphic rail to the top of the pole.

Repeat steps in reverse to retract and Store