

Congratulations on the purchase of your 360° Adjustable Banner Display.

Owner's Manual

Includes:

- Parts List
- Assembly Instructions
- Adjustment Instructions
- Disassembly Instructions
- Storage Instructions
- Care Instructions
- Warranty Information

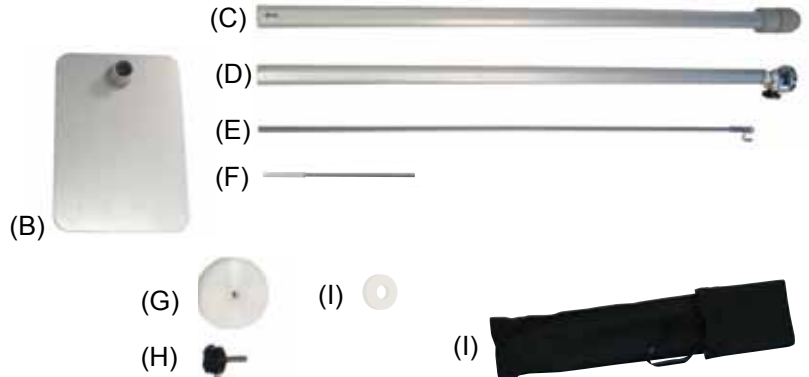
Please read all of the information carefully and contact your distributor or supplier with any issues.



Parts List

Important: Before you begin please count and inspect all pieces.

- 1- Banner (A)
- 1- Base (B)
- 1- Main Pole - Bottom (C)
- 1- Main Pole - Top (D)
- 4- Graphic Pole (E)
- 4- Graphic Pole Extension (F)
- 1- Hub (G)
- 1- Handled Screw (H)
- 8- Adhesive Floor Pads (I)
- 1- Soft Carry Case (J)

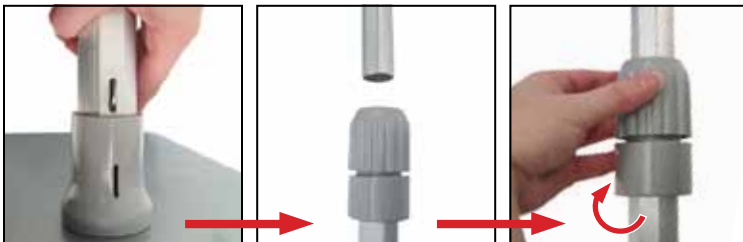


Assembly Instructions



Step 1

Take all parts out of the bag. Remove the protective film from the backs of the Adhesive Floor Pads (I) and adhere them to the corners of the bottom of the Base (B).



Step 2

Insert the bottom of the Main Pole - Bottom (C) into the Base (B). Be sure that the release wire lines up with the hole. Insert the Main Pole - Top (D) into the Main Pole - Bottom (C) and tighten at a comfortable height to work on the top.



Step 3

Use the Handled Screw (H) to attach the Hub (G) to the top of the Main Pole - Top (D). Be sure that the black rubber pad on the Hub (G) is facing the Main Pole. Loosen the Handled Screw (H) below the Hub (G) and rotate the Hub (G) to face forward, then tighten. Loosen the Handled Screw (H) that is holding the Hub (G) in place, and rotate the Hub (G) so that 2 holes on the side are facing evenly upwards.

Assembly Instructions (cont.)



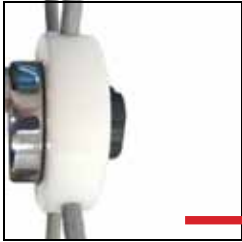
Step 4

Place the Graphic Poles (E) in the upward-facing holes on the Hub (G). Slip the hooks into two grommets on a short side of the Banner (A).



Step 5 (Optional)

Depending on the size of your banner you may need to place a Graphic Pole - Extension (F) on two or all Graphic Poles (E) before you place them in the Hub (G).



Step 6

Slide the Graphic Poles (E) into the two remaining holes on the Hub (G). Allowing the poles to bend slightly, place each hook of the two remaining Graphic Poles (E) through the bottom grommets on the Banner (A).

Adjustment Instructions



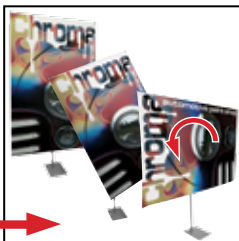
Height

Loosen the Main Poles (C&D) and raise / lower the Main Pole -Top (D) and re-tighten to adjust height.



Tilt

Loosen the Handled Screw (H) on the side of the Main Pole -Top (D). Rotate the tilt of the Hub (G) to the desired angle.



Orientation

Loosen the Handled Screw (H) on the Hub (G) and rotate the Hub (G) until the graphics are right-side up.

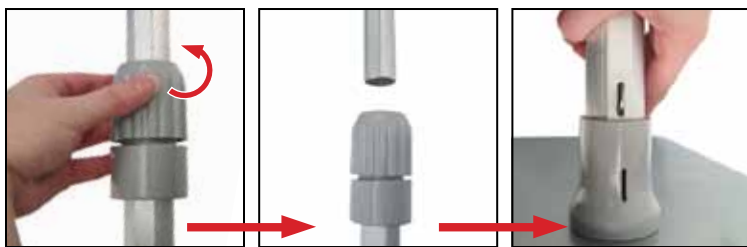
Disassembly Instructions



Step 1

Unhook the Banner (A) from the Graphic Poles (E). Remove the Graphic Poles (E) from the holes on the Hub (G).

Disassembly Instructions (cont.)



Step 2

Loosen the Main Poles and remove the Main Pole - Top (D) from the Main Pole - Bottom (C). Remove the Main Pole - Bottom (C) from the Base (B).

Storage Instructions



Store all components in Soft Carry Case (J), in a cool, dry place, away from direct sunlight.

Care Instructions

Spot clean with damp cloth.

Warranty Information

All products are designed to provide the user with a cost-effective and durable product. Standard warranty is a 'one year parts and labor' warranty which warrants product against defects in material and workmanship. It does not cover damage due to accidents, abuse, or normal wear and tear. Products found to be defective will be replaced or repaired at factory's discretion.